

# THE AVALON

## BROADVIEW HOMES

Broadview Homes has been building new family homes in the Winnipeg market for over 30 years. Choosing a Broadview Home is a great fit for homebuyers who are looking for affordability without any sacrifice of quality. We are committed to providing a great experience for our customers throughout the selection and building process continuing

after moving into the home. Our experts are here to answer your questions and make your new home process as quick and easy as possible at every stage. Our homes are available in many family friendly communities throughout Winnipeg for you to choose from. Start your next move now with Broadview Homes!



Photos shown are of the DG 15 model with upgraded features.

As part of the new home building process, Broadview Homes offers every home buyer a three-hour personal consultation with a Certified Interior Decorator in the 4,000 square foot design centre, designQ.

Elevation A: Concept Only

design **Q**



Plans and prices are subject to change without notice. Exterior renderings are for marketing purposes and may vary from actual standards included. The builder reserves the right to change material or specifications without notice, but guarantees that change will be of equal or greater value. Room dimensions are approximate. Windows in cantilevers and size of cantilevers are subject to side yard restrictions. Garage dimensions are exterior. Illustrations are artist concepts and may vary. (08/23)

P 204-254-9265 F 204-233-2518 E [broadviewhomeswpg@qualico.com](mailto:broadviewhomeswpg@qualico.com)

[BroadviewHomesWPG.com](http://BroadviewHomesWPG.com)

## HOME FEATURES

Bedroom: 3 or 4  
Bath: 2.5

Total: 1,817 Sq. Ft.

Elevation A B - Concept Only

DG 15 - 2023

# THE AVALON

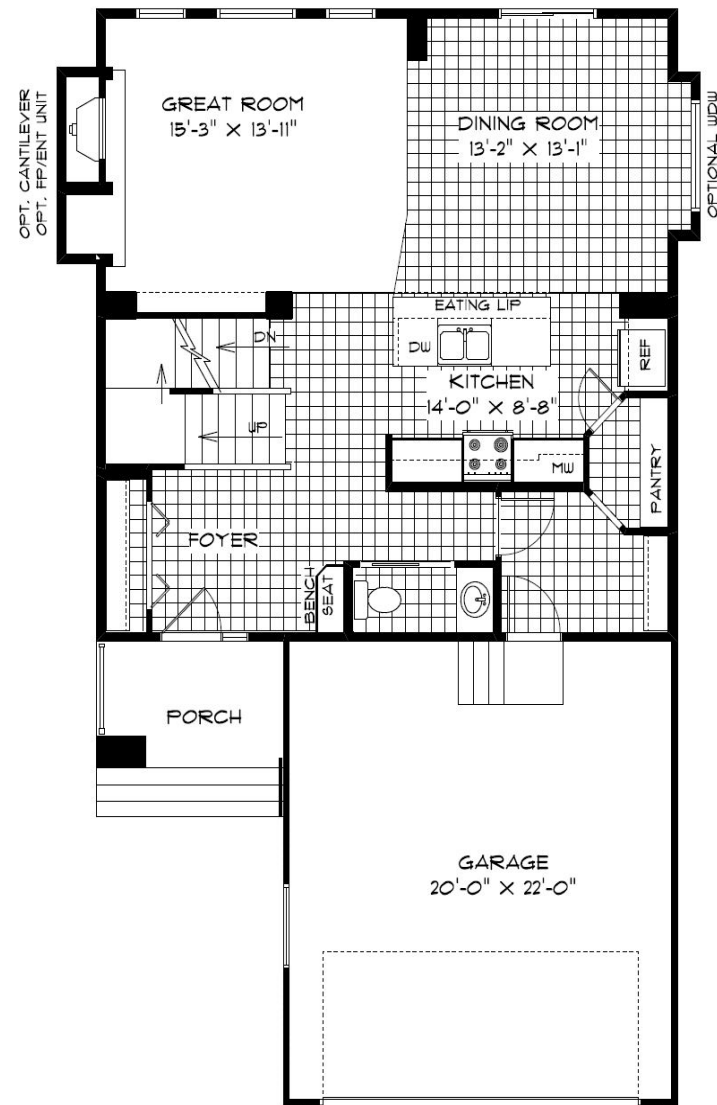
## HOME FEATURES

Bedroom: 3 or 4  
Bath: 2.5

Total: 1,817 Sq. Ft.

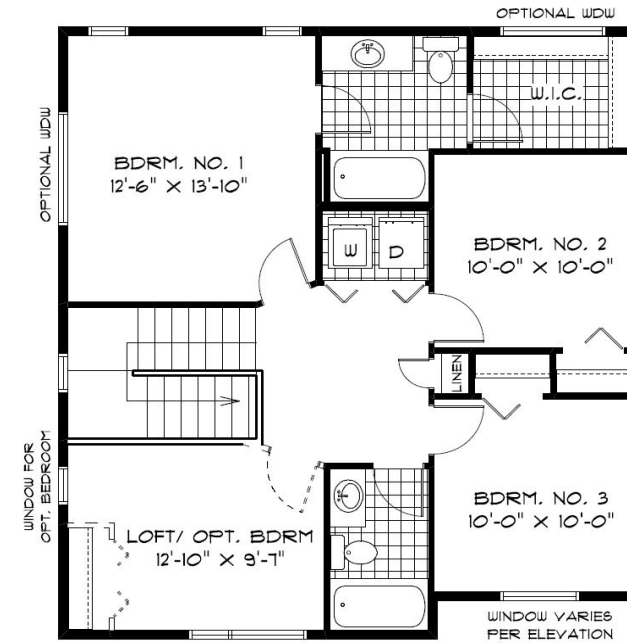
Elevation A B – Concept Only  
DG 15 - 23

- Covered Concrete Front Porch Entrance
- Foyer with Closet and Bench Seat
- Large Walk-thru Pantry and Kitchen Island
- Convenient Second Floor Laundry
- Optional Cantilever and Optional Fireplace/Entertainment Unit in Great Room
- Versatile Second Floor Loft or Opt. 4th Bedroom
- Main Floor Powder Room
- WIC and Ensuite in Primary Bedroom
- Lower Level Optional to Develop Adding an Additional Bedroom, 3rd Bath, and Rec. Room



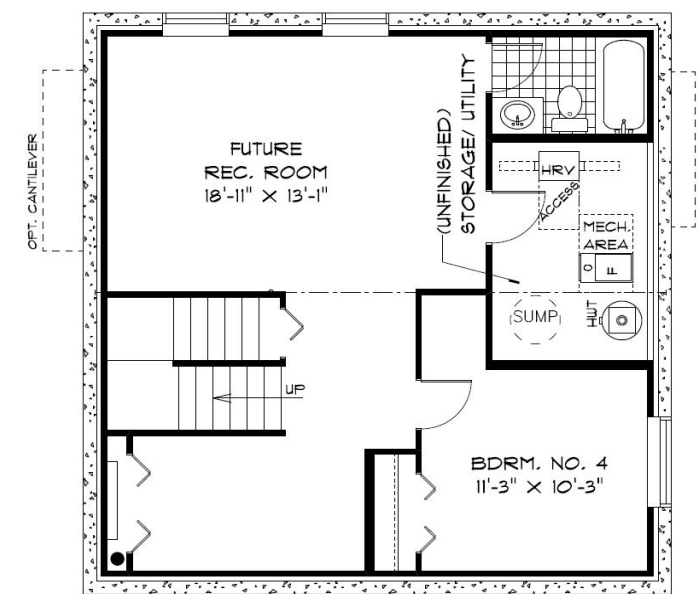
## MAIN FLOOR PLAN

894 Sq. Ft.



## SECOND FLOOR PLAN

923 Sq. Ft.



## OPTIONAL LOWER LEVEL FLOOR PLAN

Finished Area: 607 Sq. Ft.



## ELEVATIONS:

Elevations Shown are Concept Only and May Vary from Standard.

Shown with Optional Exterior Lighting & Features

PURCHASER INITIALS: \_\_\_\_\_