



BROADVIEW HOMES

Broadview Homes has been building new family homes in the Winnipeg market for over 30 years. Choosing a Broadview Home is a great fit for homebuyers who are looking for affordability without any sacrifice of quality. We are committed to providing a great experience for our customers throughout the selection and building process continuing

after moving into the home. Our experts are here to answer your questions and make your new home process as quick and easy as possible at every stage. Our homes are available in many family friendly communities throughout Winnipeg for you to choose from. Start your next move now with Broadview Homes!

THE HARLOW



Elevation A: Concept Only

Photos shown are of the DG 17 model with upgraded features.

As part of the new home building process, Broadview Homes offers every home buyer a three-hour personal consultation with a Certified Interior Decorator in the 4,000 square foot design centre, designQ.



Plans and prices are subject to change without notice. Exterior renderings are for marketing purposes and may vary from actual standards included. The builder reserves the right to change material or specifications without notice, but guarantees that change will be of equal or greater value. Room dimensions are approximate. Windows in cantilevers and size of cantilevers are subject to side yard restrictions. Garage dimensions are exterior. Illustrations are artist concepts and may vary. (08/23)

P 204-254-9265 F 204-233-2518 E broadviewhomeswpg@qualico.com

BroadviewHomesWPG.com

HOME FEATURES

Bedroom: 3 or 4 Total: 1,870 Sq. Ft. Elevation A B - Concept Only
 Bath: 2.5 DG 17 - 2023

THE HARLOW

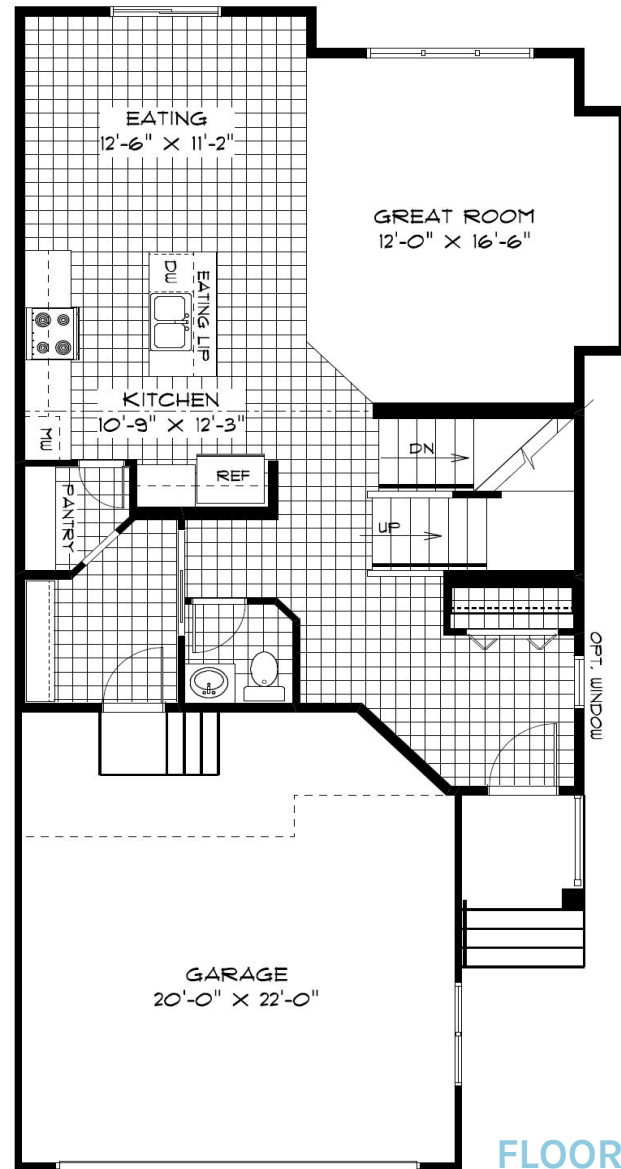
HOME FEATURES

Bedroom: 3 or 4
Bath: 2.5

Total: 1,870 Sq. Ft.

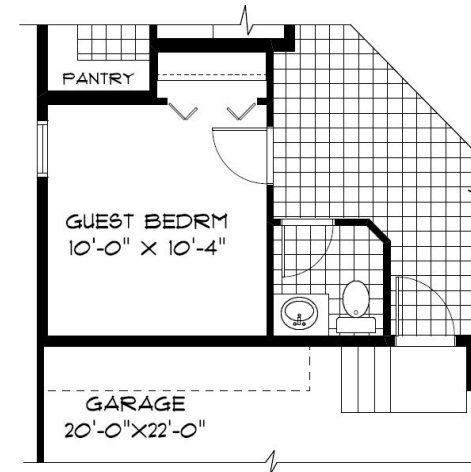
Elevation A B – Concept Only
DG 17 - 23

- Front Attached Garage
- Optional 4th Bedroom Layout
- Corner Kitchen with Walk-thru Pantry & Spacious Island
- Standard Cantilever in Great Room
- Rear Patio Door off Dining Room
- Private Ensuite and WIC in Primary Bedroom
- Second Floor Laundry Room with Shelving
- Versatile Second Floor Loft
- Lower Level Optional to Develop Adding an Additional Bedroom, Bath, and Rec. Room



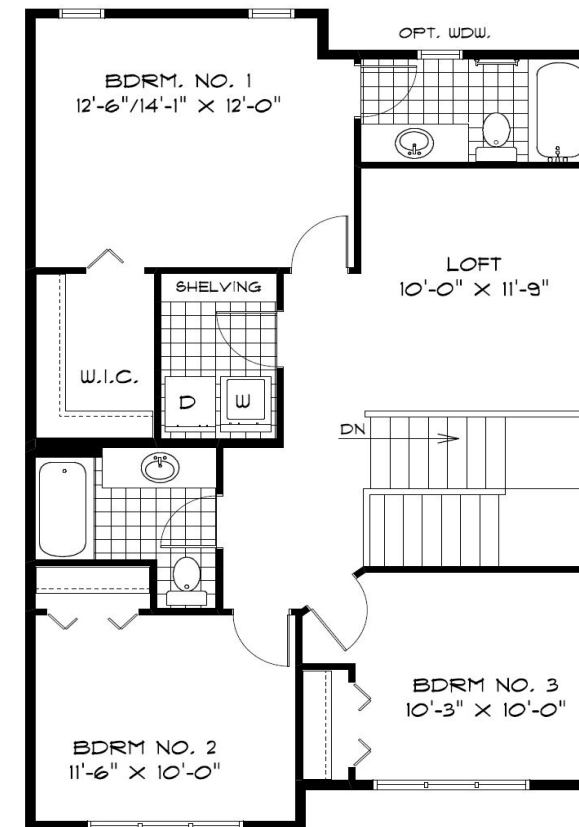
MAIN FLOOR PLAN

900 Sq. Ft.



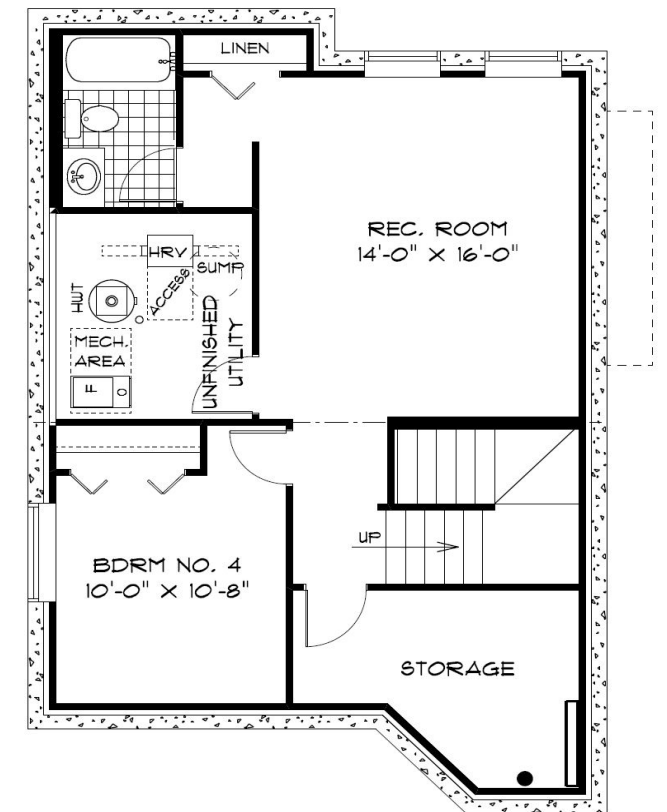
OPTIONAL MAIN FLOOR BEDROOM PLAN

(Add 69 Sq. Ft.)



SECOND FLOOR PLAN

970 Sq. Ft.



OPTIONAL LOWER LEVEL FLOOR PLAN

Finished Area: 587 Sq. Ft.

PURCHASER INITIALS: _____



ELEVATIONS:

Elevations Shown are Concept Only and May Vary from Standard.

Shown with Optional Exterior Lighting & Features